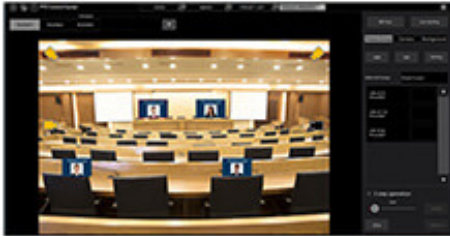


Panasonic AW-SF300

ProdCode: PANAWSF300Z

Visual Preset Software Key



Features

GUI screen that enables the subject of multiple PTZ Cameras to be switched with a single click of an icon

- Visual Preset Software Key
- GUI screens can be set for each shooting location and Preset Groups with registered subject positions can be managed.
- All cameras registered in a group can be directed toward the subject with a single press of the Preset Group icon on the GUI screen.
- Camera positions are displayed as icons on the GUI screen. The icons of cameras in the currently selected Preset Group are highlighted, enabling the user to see which cameras are shooting at a glance.
- Operation using a PC mouse and GUI screen provides ease of use for users who are unfamiliar with the operation of video equipment.

* EasyIP Setup Tool Plus is included with this product, no separate installation is required.

Need Further Support?

If you have any questions or require additional support regarding this product release, please do not hesitate to contact us. Our team is here to assist you with any inquiries or provide further information or marketing collateral as needed.

Contact Us:

- Marketing - marketing@holdan.co.uk
- Sales - sales@holdan.co.uk
- Technical Enquiries - techsales@holdan.co.uk
- Request Demo product loans - demo@holdan.co.uk

We value your partnership and are committed to ensuring a successful product launch. Thank you for your continued support.